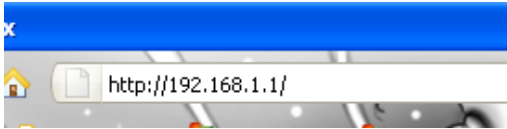


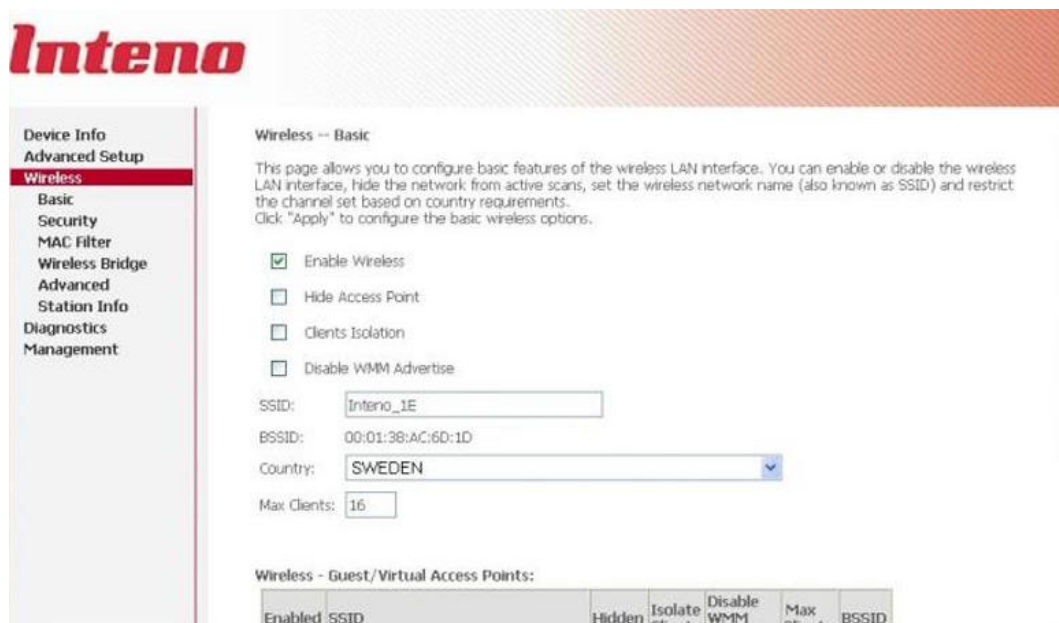
1. Starta upp en webbläsare. Skriv <http://192.168.1.1/> i webbläsarens fönster.



2. Det här inloggningsfönstret öppnas, skriv användarnamn **"admin"** och lösenord **"4169adsl"**. Klicka sedan på **OK**.



3. På menyn till vänster klickar du på Wireless.



4. På den här sidan kan du konfigurera grundläggande funktionerna i den trådlösa funktionen. Du kan aktivera (enable) eller inaktivera (disable) modemmet eller dölja nätverket. Tryck Security till vänster, och skriv namnet på nätverket vid SSID. Klicka på Verkställ för att konfigurera de grundläggande trådlösa alternativ.

Inteno

Device Info
Advanced Setup
Wireless
Basic
Security
MAC Filter
Wireless Bridge
Advanced
Station Info
Diagnostics
Management

Wireless -- Basic

This page allows you to configure basic features of the wireless LAN interface. You can enable or disable the wireless LAN interface, hide the network from active scans, set the wireless network name (also known as SSID) and restrict the channel set based on country requirements. Click "Apply" to configure the basic wireless options.

Enable Wireless
 Hide Access Point
 Clients Isolation
 Disable WMM Advertise

SSID: Inteno_1E
BSSID: 00:D1:38:AC:6D:1D
Country: SWEDEN
Max Clients: 16

Wireless - Guest/Virtual Access Points:

Enabled	SSID	Hidden	Isolate Clients	Disable WMM	Max Clients	BSSID
---------	------	--------	-----------------	-------------	-------------	-------

5. Scrolla ner på sidan till "Network Authentication" kan du byta krypteringsätt ex om du vill ha WEP eller WPA i scrollistan.

Inteno

Device Info
Advanced Setup
Wireless
Basic
Security
MAC Filter
Wireless Bridge
Advanced
Station Info
Diagnostics
Management

Wireless -- Security

This page allows you to configure security features of the wireless LAN interface. You may setup configuration manually, OR through WiFi Protected Setup(WPS)

WSC Setup

Enable WSC: Disabled

Manual Setup AP

You can set the network authentication method, selecting data encryption, specify whether a network key is required to authenticate to this wireless network, and specify the encryption strength. Click "Save/Apply" when done.

Select SSID: Inteno_1E
Network Authentication: WPA-PSK
WPA Pre-Shared Key: * Click here to display
WPA Group Rekey Interval: 0
WPA Encryption: TKIP
WEP Encryption: Disabled

Save/Apply

- Vid WPA Pre-Shared Key, skriver du nätverksnyckeln.
WPA kräver 8 tecken i krypteringsnyckeln (0-9 & A-Z) 64 bit WEP kräver 10 tecken i krypteringsnyckeln. 128 bit WEP kräver 26 tecken i krypteringsnyckeln. WEP krypteringsnyckel får innehålla 0-9 samt A-F.

Inteno

Device Info
Advanced Setup
Wireless
Basic
Security
MAC Filter
Wireless Bridge
Advanced
Station Info
Diagnostics
Management

Wireless -- Security

This page allows you to configure security features of the wireless LAN interface.
You may setup configuration manually
OR
through WiFi Protected Setup(WPS)

WSC Setup

Enable WSC: Disabled

Manual Setup AP

You can set the network authentication method, selecting data encryption, specify whether a network key is required to authenticate to this wireless network, and specify the encryption strength. Click "Save/Apply" when done.

Select SSID: Inteno_1E

Network Authentication: WPA-PSK

WPA Pre-Shared Key: * [Click here to display](#)

WPA Group Rekey Interval: 0

WPA Encryption: TKIP

WEP Encryption: Disabled

Save/Apply

- Tryck "SAVE/APPLY"

Inteno

Device Info
Advanced Setup
Wireless
Basic
Security
MAC Filter
Wireless Bridge
Advanced
Station Info
Diagnostics
Management

Wireless -- Security

This page allows you to configure security features of the wireless LAN interface.
You may setup configuration manually
OR
through WiFi Protected Setup(WPS)

WSC Setup

Enable WSC: Disabled

Manual Setup AP

You can set the network authentication method, selecting data encryption, specify whether a network key is required to authenticate to this wireless network, and specify the encryption strength. Click "Save/Apply" when done.

Select SSID: Inteno_1E

Network Authentication: WPA-PSK

WPA Pre-Shared Key: * [Click here to display](#)

WPA Group Rekey Interval: 0

WPA Encryption: TKIP

WEP Encryption: Disabled

Save/Apply

- Nu är det "KLART"!